



Clinical Applications of Face Reading

Lillian Pearl Bridges

© Lotus Institute, Inc.

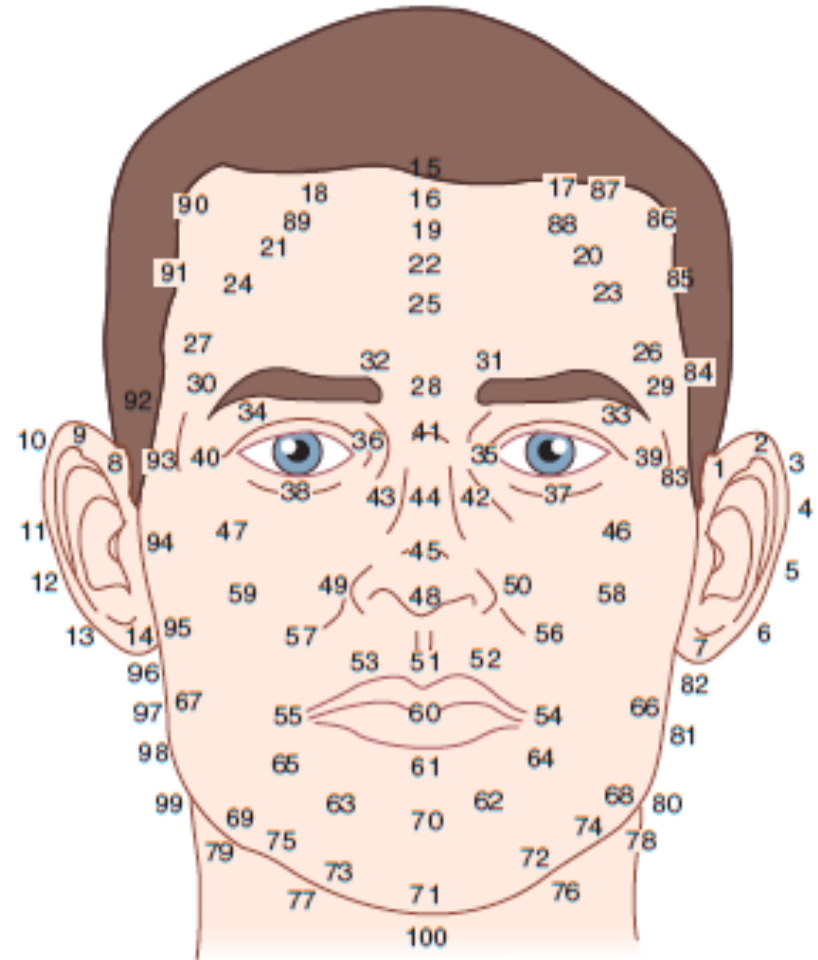
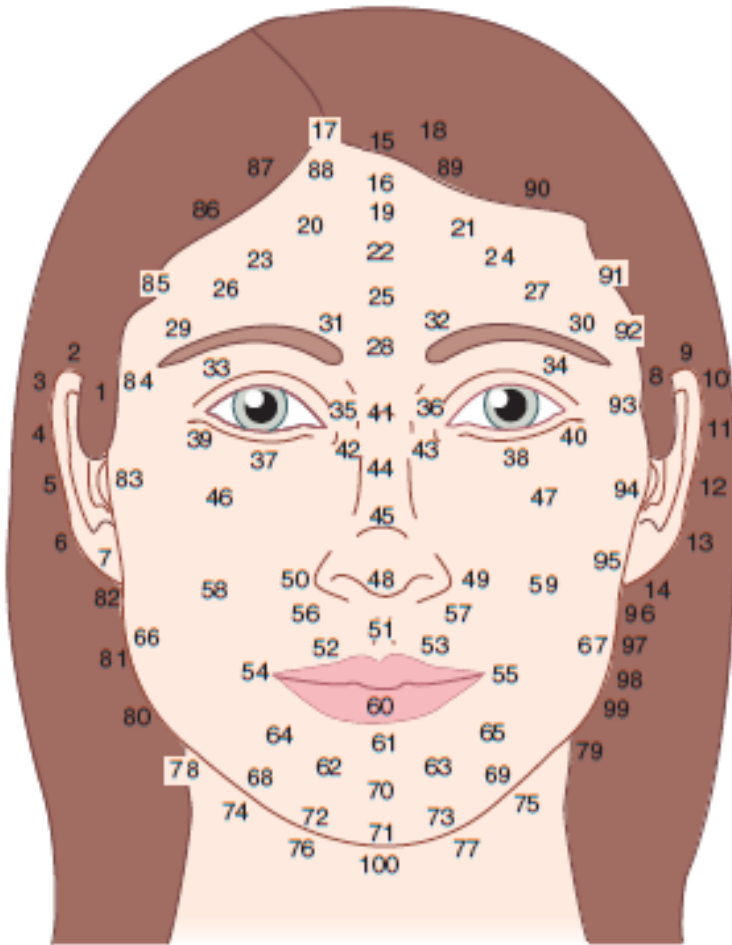
Mountains and Rivers

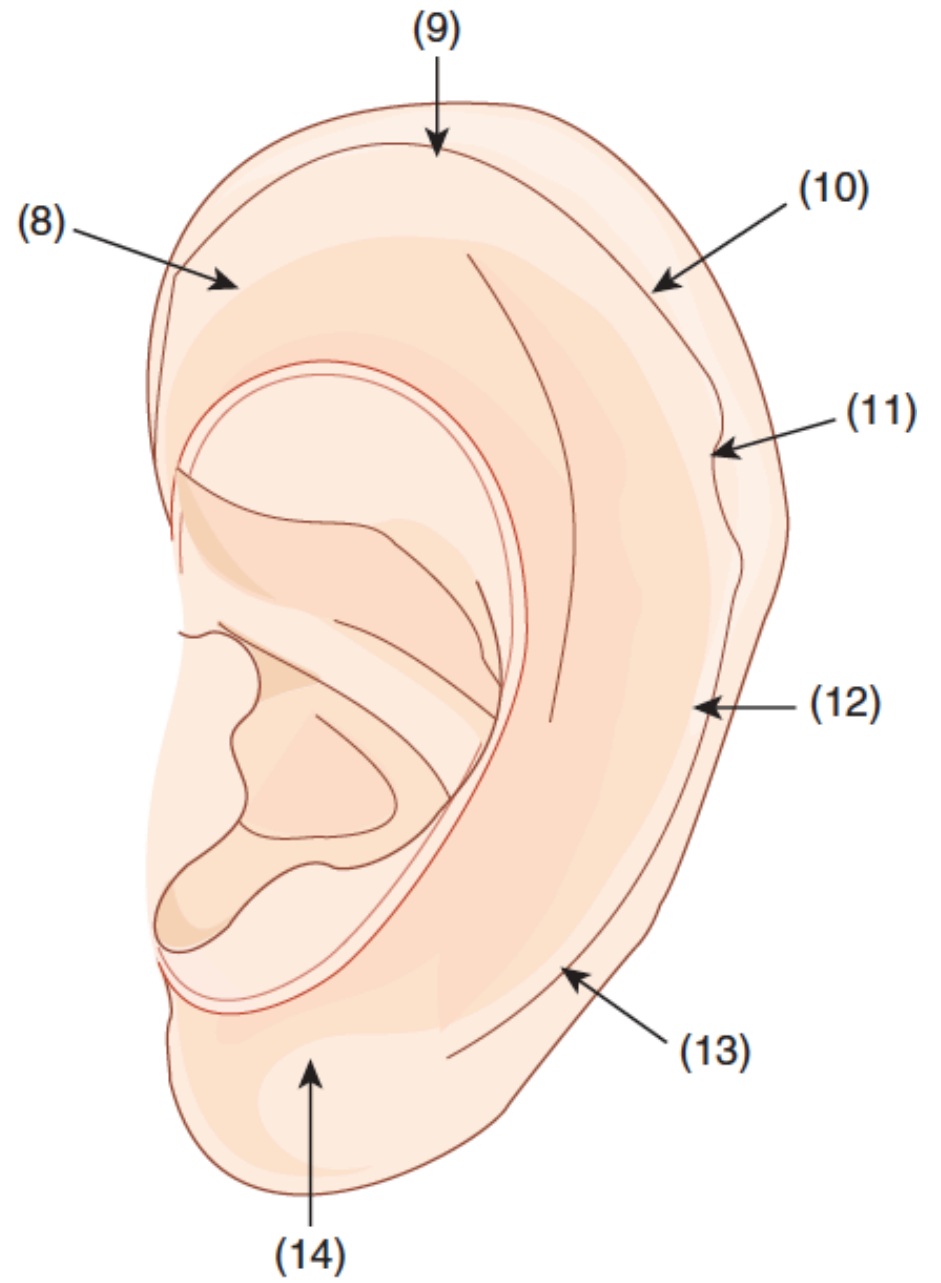
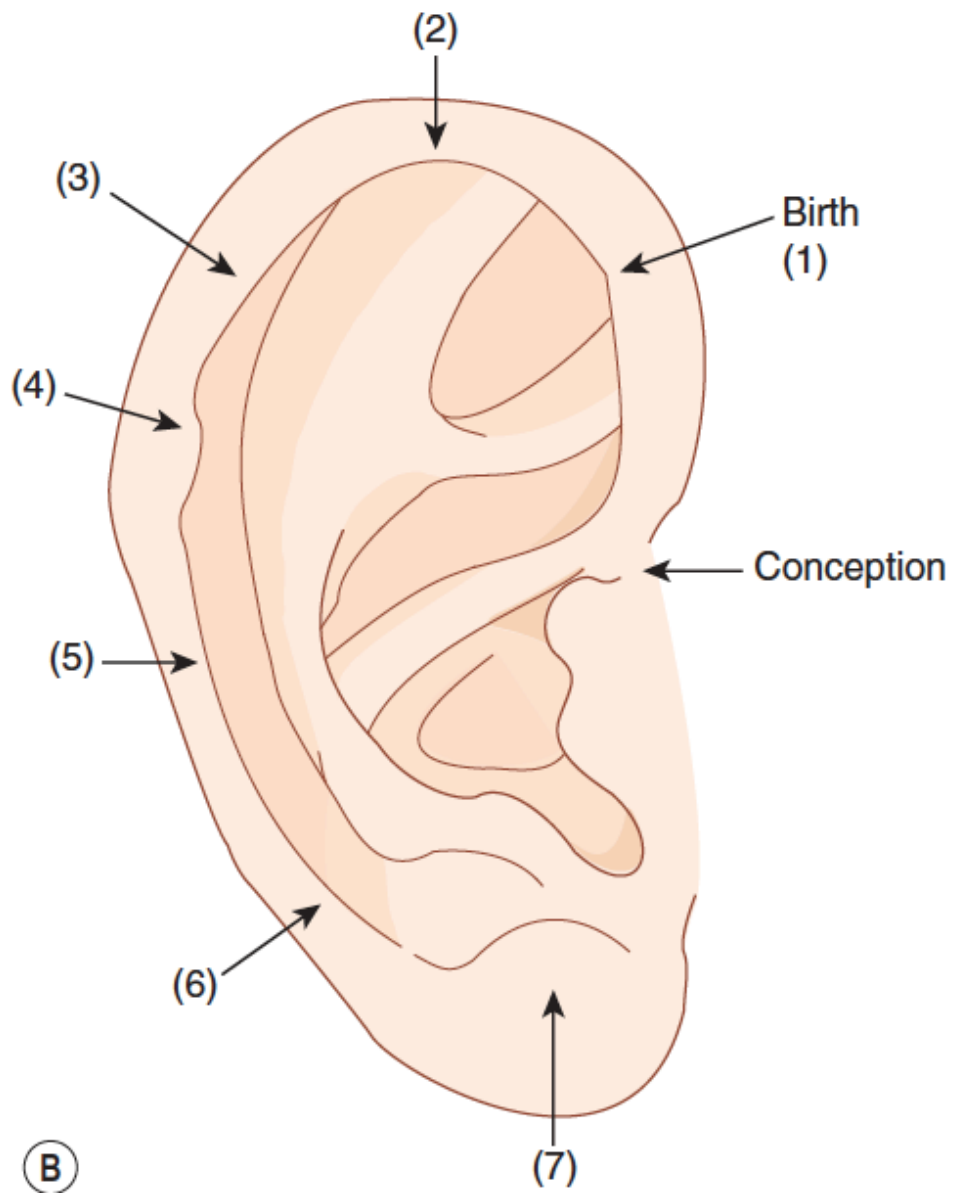
Fundamental Yin and Yang



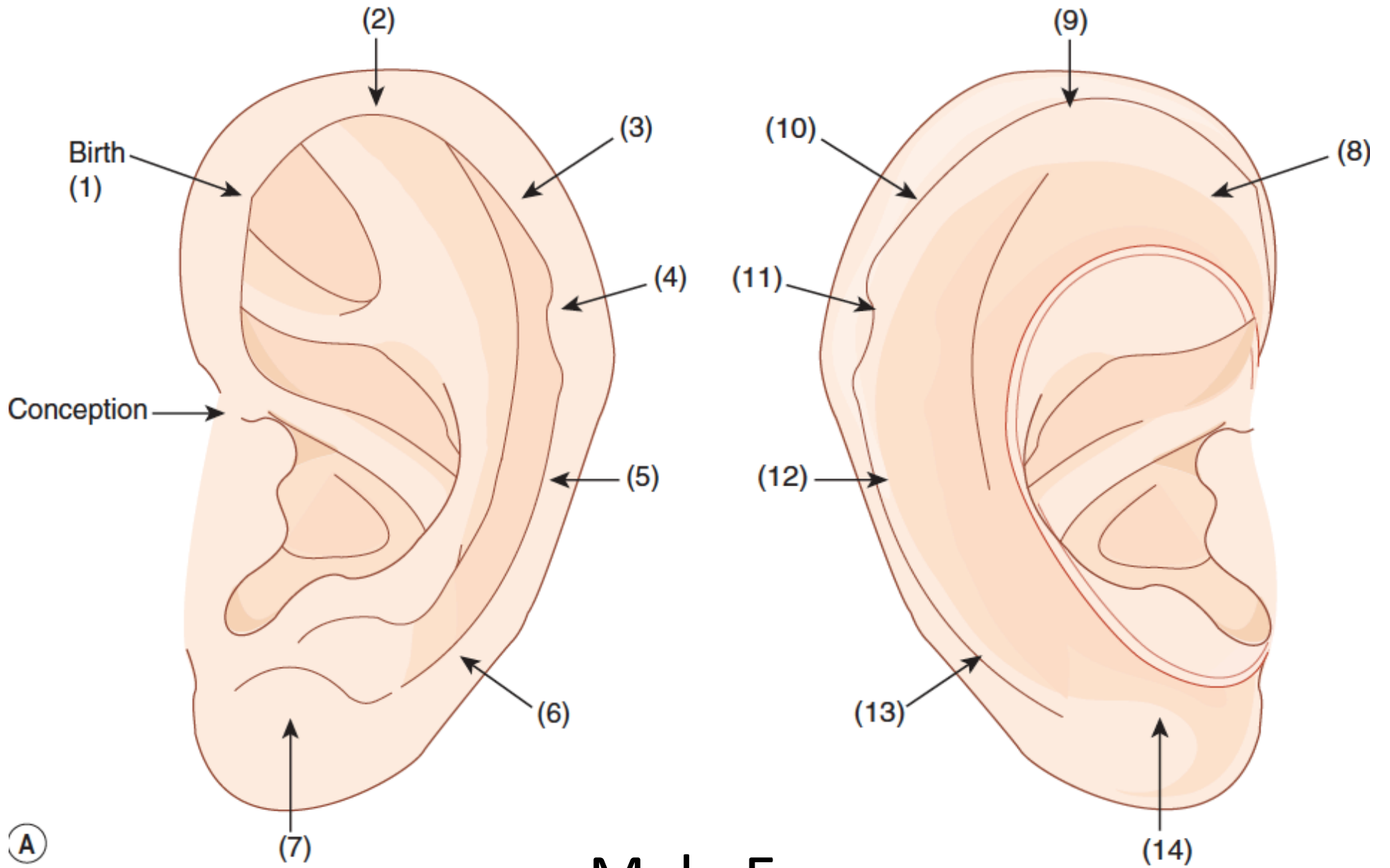
- Mountainous Features are those with bone:
Forehead, Nose, Cheekbones and Jaw
- River Features are those associated with fluids that exude: Ears, Eyebrows/Eyes, Nostrils/Groove, Mouth
- They create a Topographical Map
- Marking Mountains are harder than marking Rivers so the markings may be more important
- Plains are the features where flesh can accumulate
- Valleys are places where the energy sinks

Female and Male Age Map



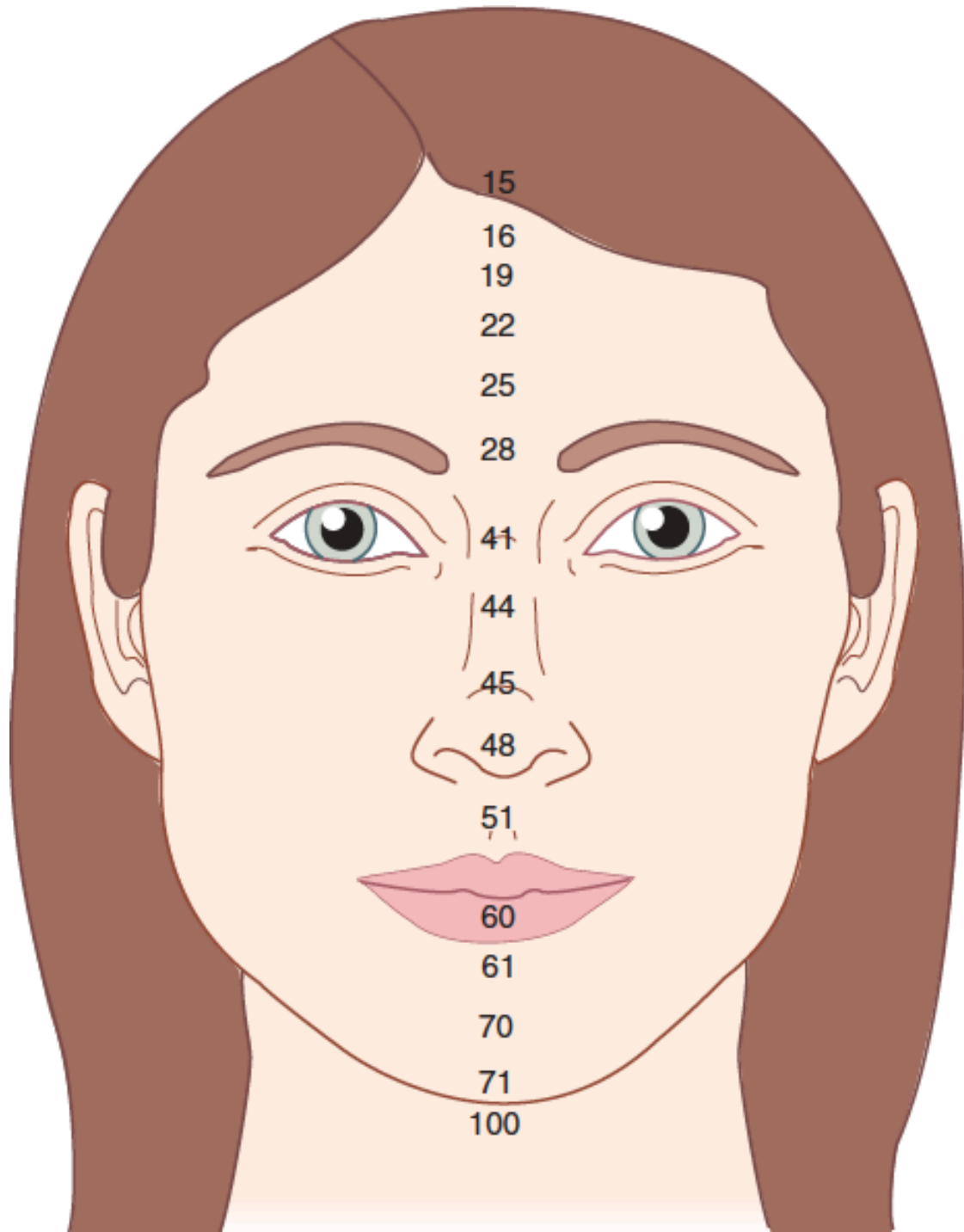


Female Ears



Male Ears

A



15

16

19

22

25

28

41

44

45

48

51

60

61

70

71

100

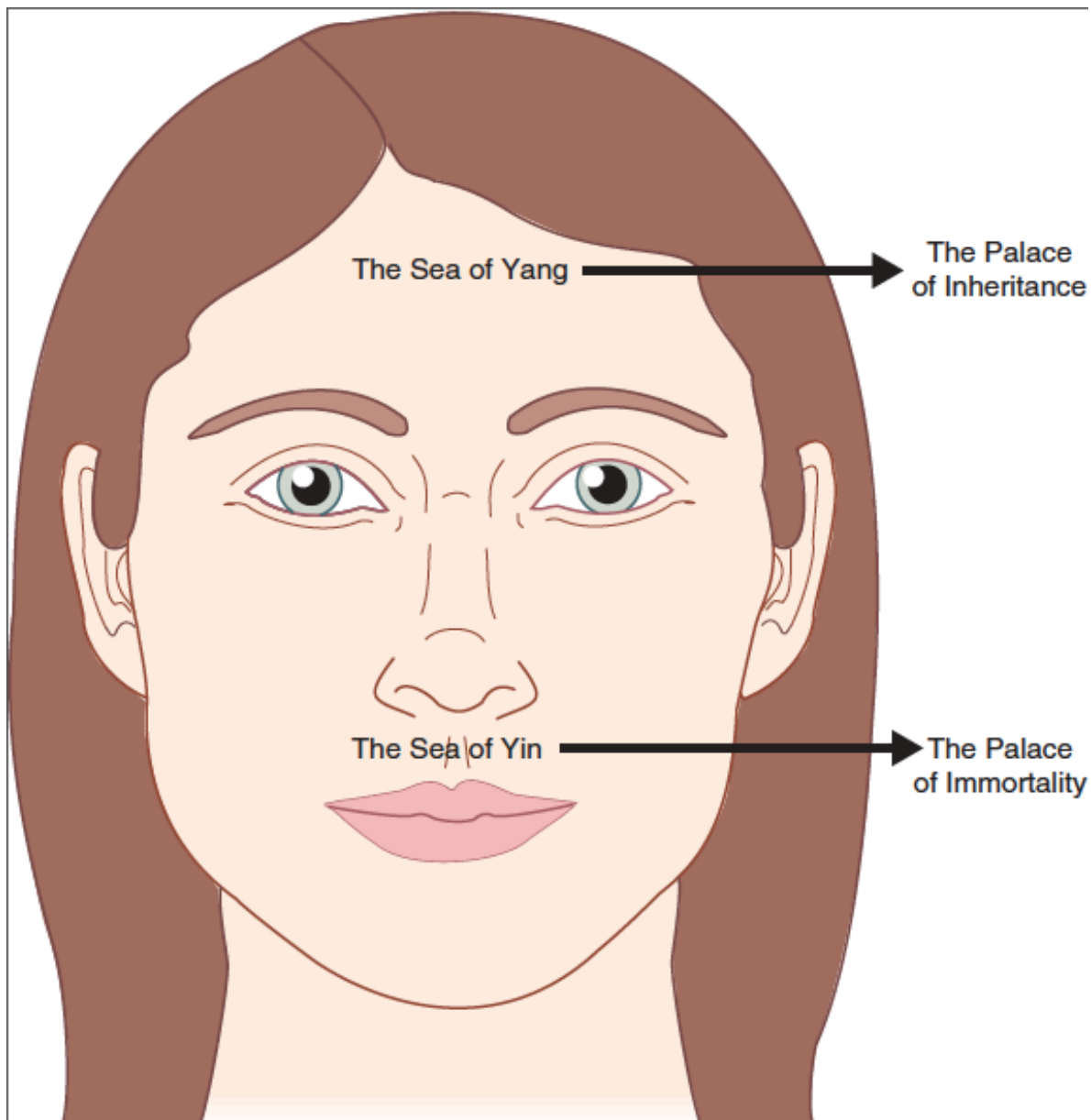
Critical Transitions

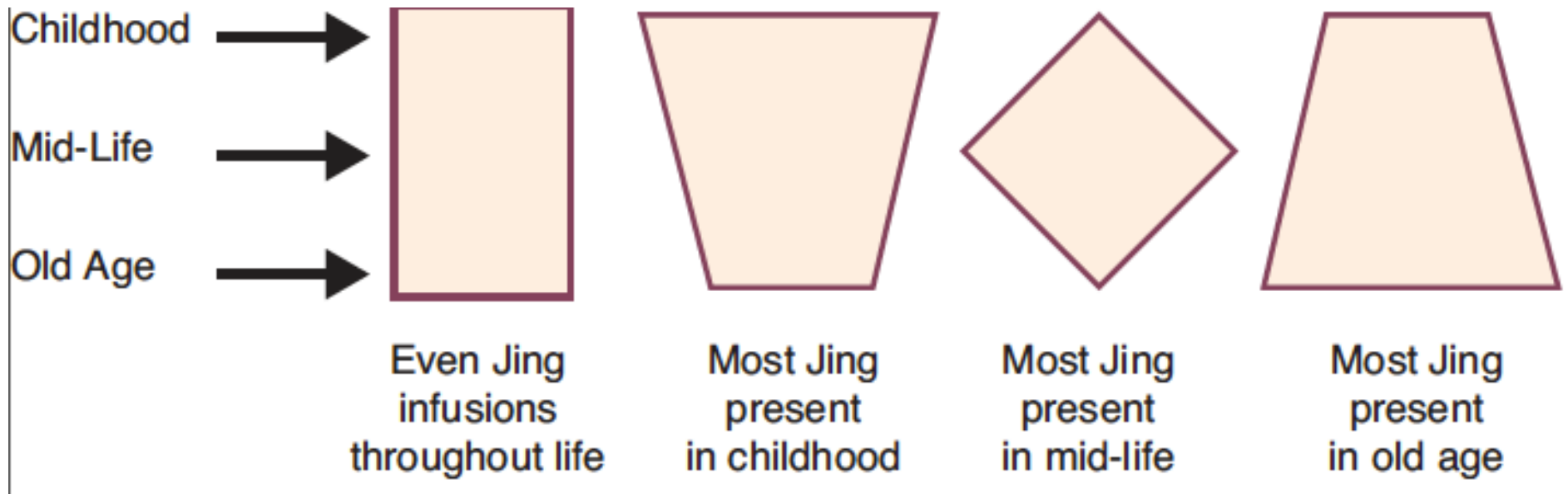
- Critical Transitions are the years right before and after a decade birthday.
- These are especially “difficult” times, where the armor of the personality cracks under the repetition of trauma and the reoccurrence of previous issues that need to be worked through in order to move forward and clear the body.
- 33 years old a special crisis –“Jesus/Buddha time.”
- The older you are that issues arise to be worked on, the more likely you will be affected physically.

Signs of Jing on the Face

- The Cartilage of the Ear can be evaluated for strength and flexibility indicating quality and quantity of inherent Jing in terms of physical constitution and spirit
- The Upper Forehead shows the ancestral gifts - talents, abilities, interests and desires from mother's and father's families and is called the Palace of Inheritance.
- The Philtrum reveals potential fertility and creativity and is called the Palace of Immortality.

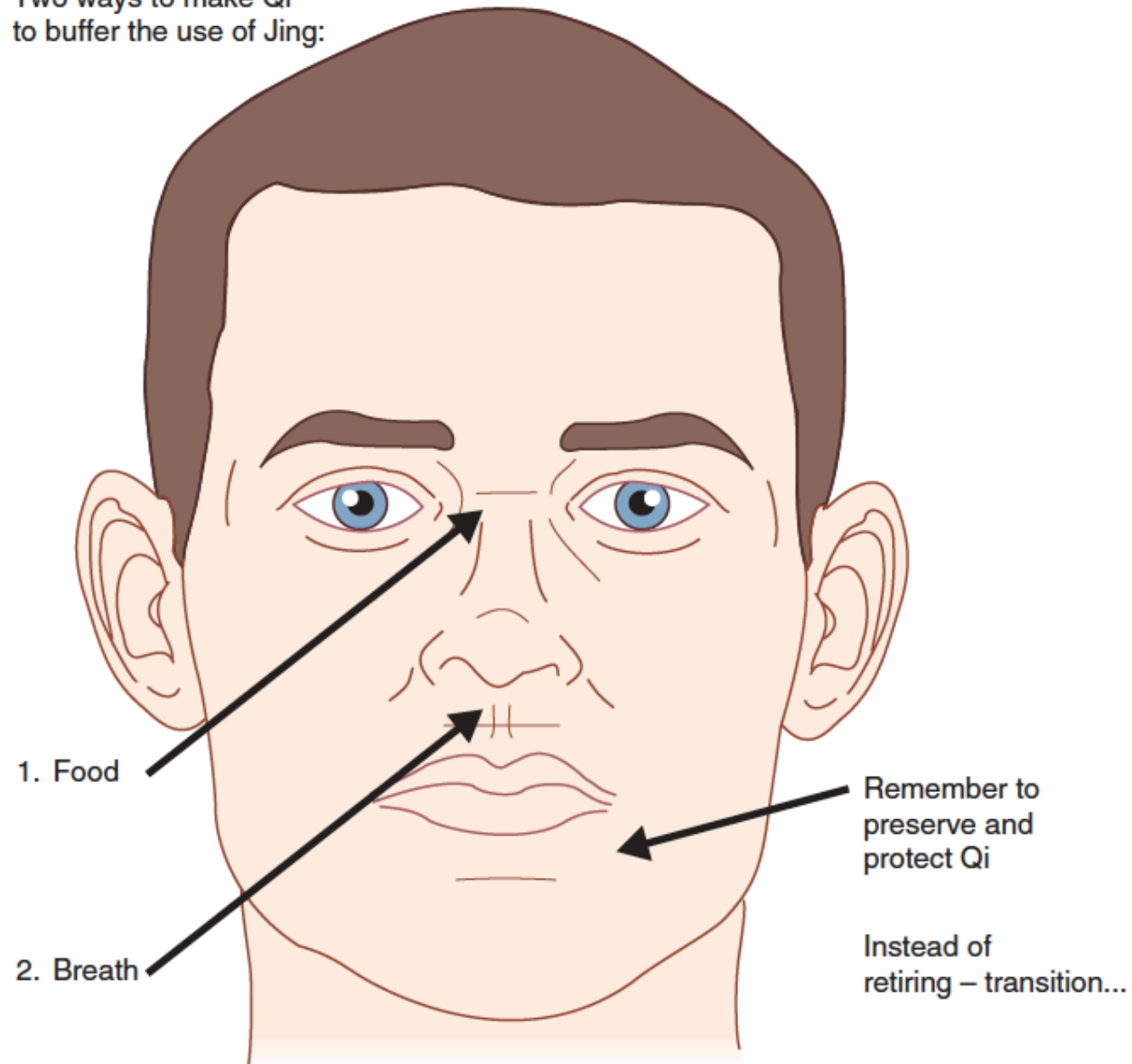
Seas of Yin and Yang



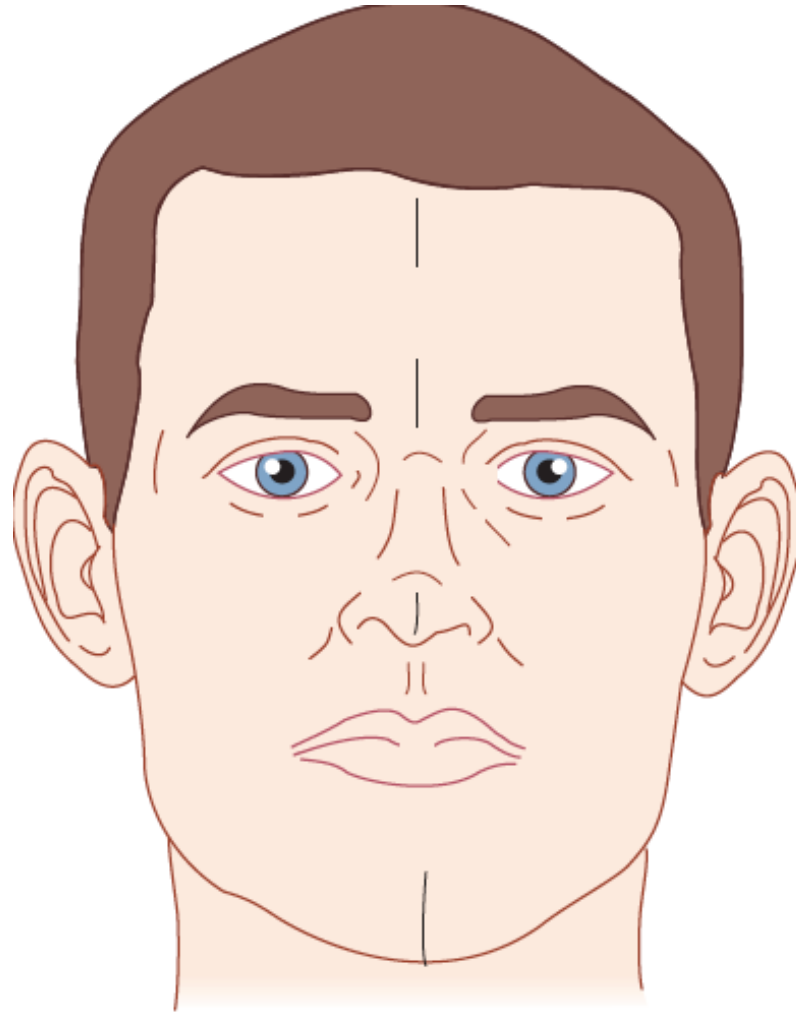


Jing Markers

Two ways to make Qi
to buffer the use of Jing:

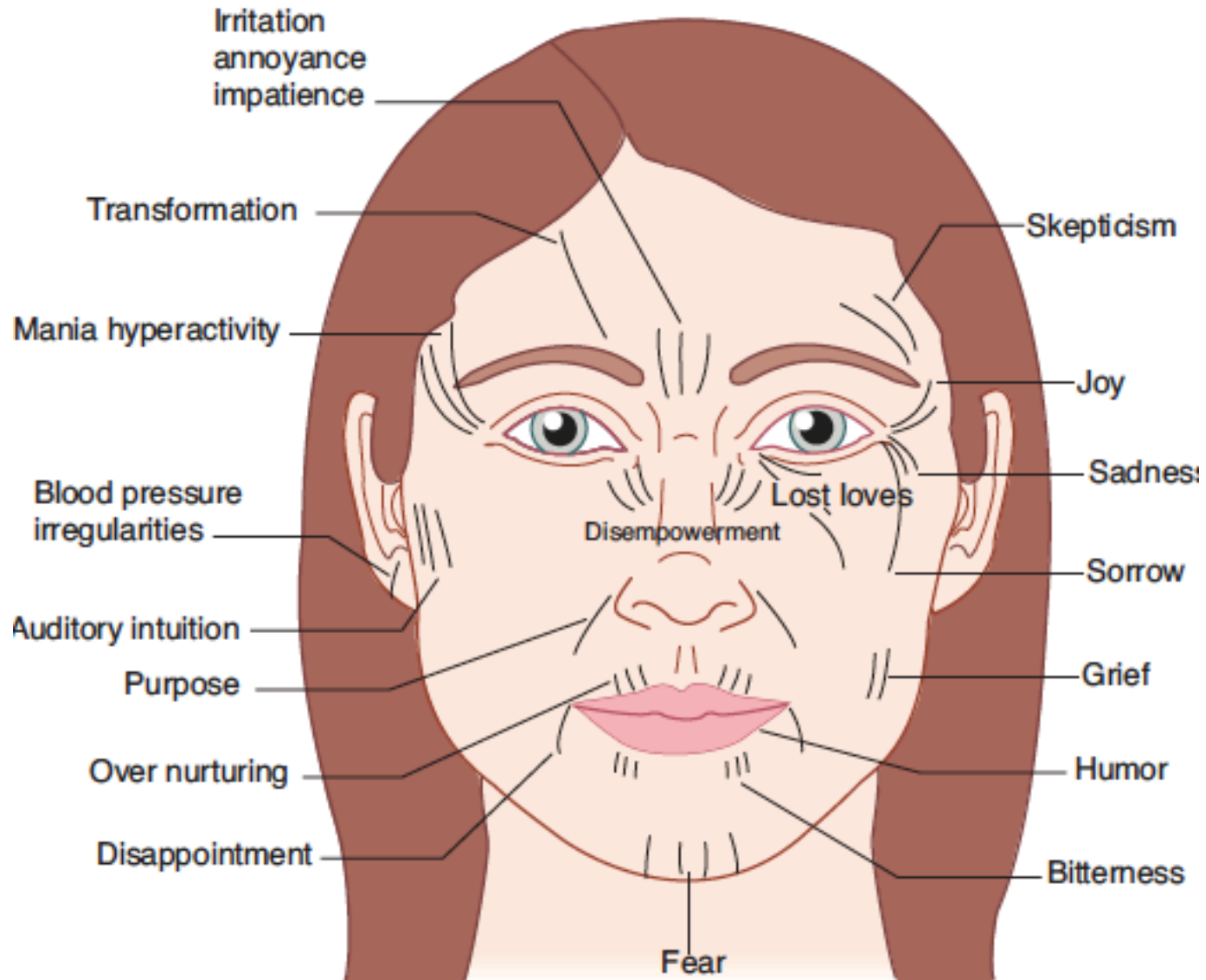


Jing Blockages



These are “islands in the stream,” where the Du and Ren Channels have blockages or a lack of Jing flowing through of the Extraordinary Meridians that limits the full flow of the “River of Life.”

Emotional Map





- | | |
|---|---|
|  Kidney |  Adrenals |
|  Liver |  Prostate/Ovaries |
|  Pericardium |  Small Intestine |
|  Stomach |  Large Intestine |
|  Spleen/Pancreas |  Heart |
|  Lungs | |

Diagnostic Colors on the Face

The markings and coloration in certain areas of the face show current functioning of the related organs. The basic colors are:

- Red – Inflammation
- White – Frozen
- Dark – Stagnation
- Green – Toxicity
- Yellow – Putrefaction/Phlegm

Suwen 39:

"The five depots and six palaces, they definitely all have corresponding sections. When inspecting the five colors there, yellow and red represent heat, white represents cold, green-blue color and black represent pain. This is the so-called from inspection one can obtain insight."